

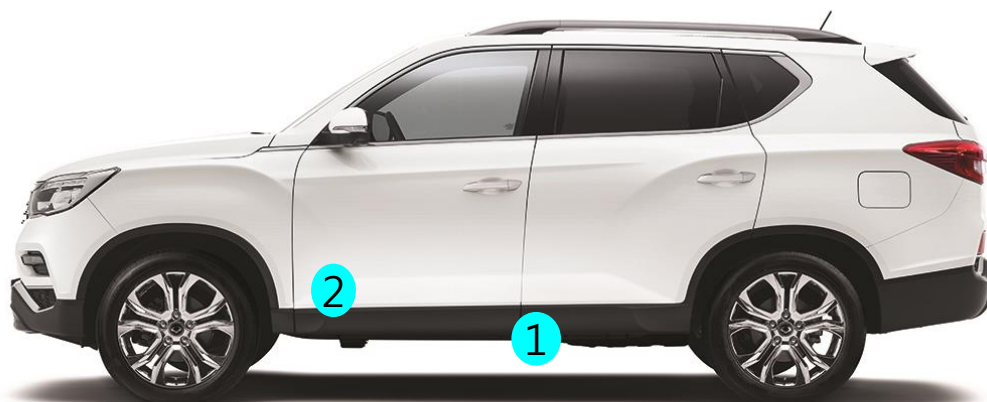
FEB, 2021



REXTON

Accessories

REXTON



NO	TYPE	PART NO	PART NAME	REMARK	
1	SIDE STEP	09AP008031E	STEP ASSY-SIDE-LH	Y400 only	KBA certified : German homologation
		09AP008032E	STEP ASSY-SIDE-RH	Y400 only	
		09AP008031E1	STEP ASSY-SIDE-LH	Y450 only (20M/Y)	
		09AP008032E1	STEP ASSY-SIDE-RH	Y450 only (20M/Y)	
2	EXTERIOR	09AP0366DS	DOOR GARNISH [SET]	Y450 only (20M/Y)	
		09AP0365WS	WHEEL-ARCH DOOR GARNISH [SET]	Y450 only (20M/Y)	
		09AP038046	UNDER-COVER		
		09AP034H00	SPINNING WHEEL CAP	ALL VEHICLE	
		09AP034H00B	SPINNING WHEEL CAP (SET)	ALL VEHICLE	



NO	TYPE	PART NO	PART NAME	REMARK
3	INTERIOR	09AP036040	PEDAL ASSY-ALLOY (SPORTS)	REXTON LHD ONLY
		09AP036150	LAMP ASSY-DOOR SPOT [SET] REXTON	Y450 (20 M/Y)
		09AP038001	LUGGAGE TRAY ASSY	
4	ELECTRICAL	09AP03AB00	AFTER BLOW-AIR CONDITIONER	Blow manager
		09AP03AHP0	AIR PURIFIER_HEADLINING	ALL VEHICLE
		09AP03AHF0	FILTER-AIR PURIFIER_HEADLINING	ALL VEHICLE
5	CAMPING	09AP036Q00	CAR-TENT(Y450)	Order unit(UPQ) 4 pcs
		09AP036AM0	AIR MAT-CAR CAMPING	Order unit(UPQ) 4 pcs



01. SIDE STEP

KBA certified : German homologation

REXTON(Y400)



NEW REXTON(Y450)



* Net Dimensions for one piece: 1973 x 186 x 102 mm (WxLxH)/14kg

Model	Part No	Part Name	Applicable from	Applicable to	Remark
REXTON (Y400)	09AP008031E	STEP ASSY-SIDE-LH	May 1, 2017	Nov 1,2020	Y400 only Not compatible with Y450
	09AP008032E	STEP ASSY-SIDE-RH	May 1, 2017	Nov 1,2020	
REXTON (Y450, 20 M/Y)	09AP008031E1	STEP ASSY-SIDE-LH	Nov 1,2020	-	Y450 only Not compatible with Y400
	09AP008032E1	STEP ASSY-SIDE-RH	Nov 1,2020	-	

02. EXTERIOR

NEW REXTON (Y450)



① 09AP0366DS DOOR GARNISH [SET]_Y450

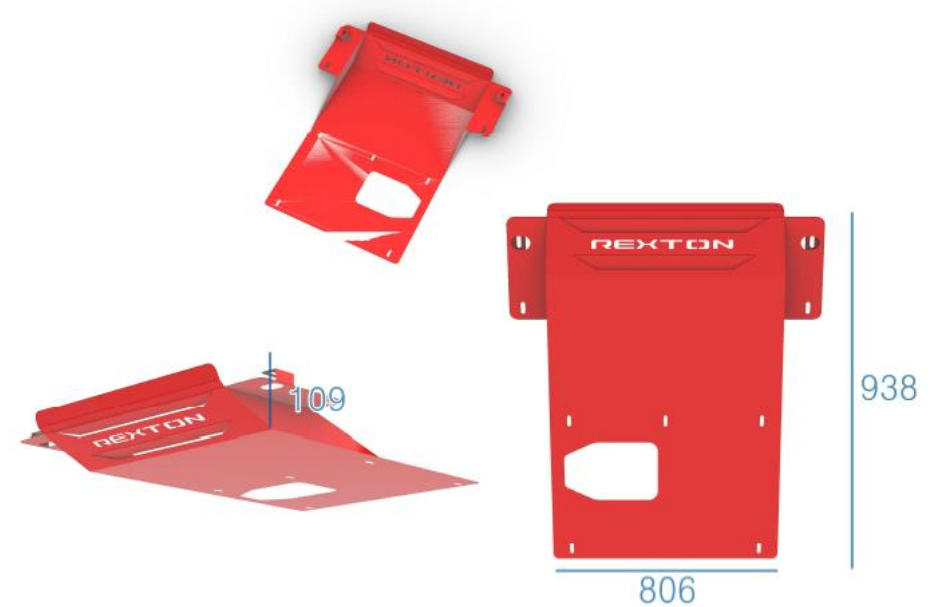
[set] Front door L/H, Rear door L/H

② 09AP0365WS WHEEL ARCH GARNISH[SET]_Y450

[set] Front bumper L/H, Fender L/H, Rear Door L/H, Rear Bumper L/H



02. EXTERIOR



09AP038046

UNDER COVER

For REXTON

- *Under body protection from off-road*
- *Vehicle dress-up effect*

- Available color: Red
- Material : Ss41, Thickness : 3T

Width	Length	Height	Net weight
806mm	938mm	109mm	10Kg

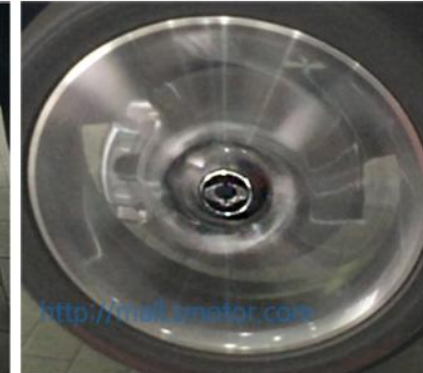
02. EXTERIOR

09AP034H00B SPINNING WHEEL CAP (SET_4PCS)

09AP034H00 SPINNING WHEEL CAP (1PCS)



- *Locate logo upward*
- *Visually noticeable effect as the symbol is always positioned correctly during packing & driving*
- *UV coating & special transparent coating after logo installation*
- *Completely waterproof*



03. INTERIOR

09AP036040

PEDAL ASSY-ALLOY(SPORTS)



- LHD vehicles only
- Stainless steel material with rubber plate (Nonskid pedal)

09AP036150

LAMP ASSY-DOOR SPOT [SET] REXTON



NEW REXTON(Y450)

- DOOR SPOT LAMP with "REXTON"
- Y450 REXTON (20M/Y)

03. INTERIOR



- Rexton exclusive logo LED lighting adds luxury
- Obstacle check function on the floor before getting in the car
- Vehicle dress-up effect
- Including wiring & connector for door spot lamp(x2)



09AP036150 LAMP ASSY-DOOR SPOT [SET]

09AP036151 LAMP ASSY-DOOR SPOT [LH]

09AP036152 LAMP ASSY-DOOR SPOT [RH]



03. INTERIOR

09AP038001 LUGGAGE TRAY ASSY (REXTON)



- *5-seat Only*
- *Optimization of luggage space utilization*
- *Storage of various vehicle items (Umbrella, Car wash products, Shoes, Camping supplies etc.)*

04. ELECTRICAL

09AP03AB00 BLOW MANAGER-AIR CONDITIONER



Characteristics

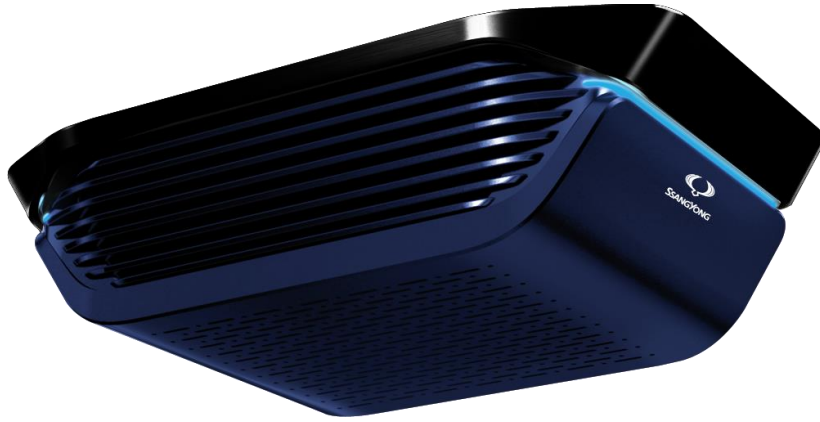
- Air conditioner moisture dryer
- When operation is stopped, mold formation & odor will be reduced by automatically removing moisture from the air conditioner
- Rated voltage ; DC 12V,
- Overheating, Overdischarging, overcurrent prevention function
- SIZE ; 81.6 x 108.5 x 33.3 mm



Operation

1. Less than 6 minutes after start-up; Not working
2. Less than 30 minutes after start-up
 - 10 seconds operation after waiting 30 seconds
 - 1 minute Operation and 1 minute stand-by after waiting for 10 minutes (5 times)
3. 30 minutes or more after starting
 - 10 seconds operation after waiting for 30 seconds
 - 1 minute operation and 1 minute stand-by after waiting for 10 minutes (10 times)

04. ELECTRICAL



09AP03AHP0 AIR PURIFIER-HEADLING

09AP03AHF0 FILTER-AIR PURIFIER-HEADLING



- *Applicable to all models*
- *Indoor air purification and odor deodorization*
- *5-layer H13 HEPA filter applied*
- *Indoor air purification for 10 minutes*
- *Low noise (30-45dB)*
- *In-vehicle air quality LED can be checked (4 stage)*



5. CAMPING



09AP036Q00 CAR TENT (Y450)

- Components ; Tent skin, Central arch pole, side straight pole, storage bag
- Install size ; W170 x D238 x H135 cm
- Tent storage size ; W55 x D20 x H12 cm



Order unit(UPQ) 4 pcs

- Balance tension system ; Tent installation with its own string that does not require pack-down
- Rain screen ; Top & side design to prevent rainwater from entering the tent
- Canopy ; Opening a solid door without a separate tarp
- High quality mosquito net installation on front door
- Blocks the entry of cold air and pests by installing an air curtain
- Condensation is minimized by applying the ventilation window structure of the alpine tent

5. CAMPING

09AP036AM0

AIR MAT-CAR CAMPING (REXTON)



- Y400 / Y450
- Size ; W140 x H200cm
- Material ; PVC, Flocking etc.
- Components ; Air mat, Air pump, Repair kit, Air pillow

Order unit(UPQ) 4 pcs

New



- *Easy installation*
- *Soft velvet material provides a fluffy and soft touch*
- *Easy cleaning*
- *High load and excellent durability processing*
- *Air injection using vehicle cigar jack*
- *Provides a small and light bag for easy storage*